

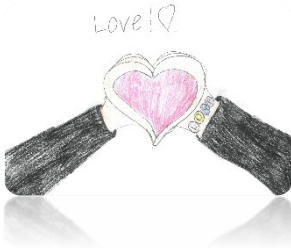
Child-friendly Child Safe Policy



Created by the Student Representative Council

About our school

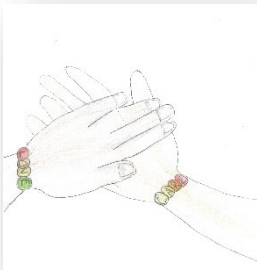
School Motto



Loving God,
Loving Others,
Loving Learning

School Values

Compassion



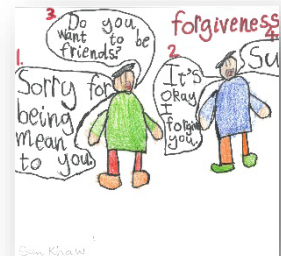
Courage



Service



Forgiveness

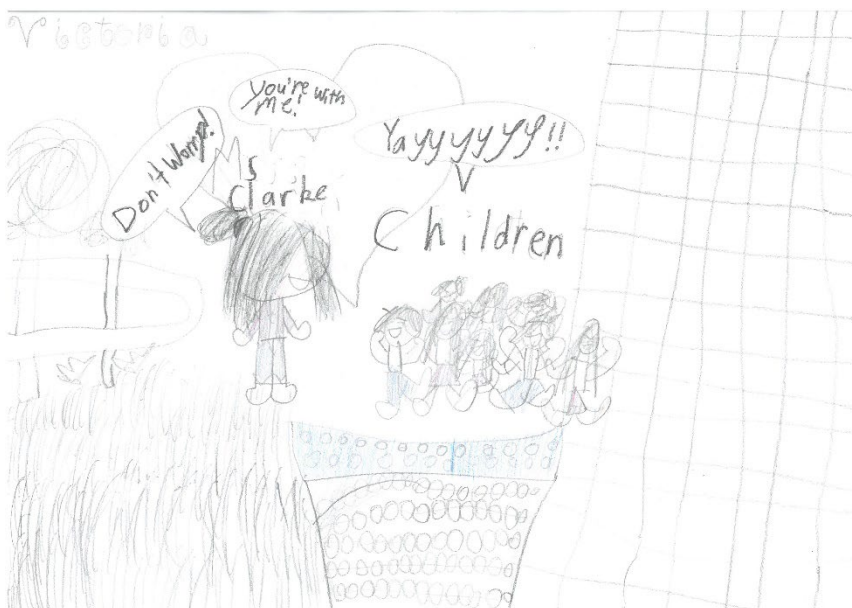


Introduction

We believe that God created everyone, and that each person is special and unique. We strive to follow the example of Jesus who came to earth to serve others. Our school is committed to keeping everyone in our school community safe. Everyone has the right to feel safe and be safe. Students can tell a trusted adult if they are worried, scared or do not feel safe.

Purpose

The purpose of this policy is to help students understand how staff will keep students safe. This includes when students are at school, on excursions and camps, and when they are online.



Commitment to Child Safety

Students have the right to feel safe and the school is committed to taking action against unsafe behaviour. Staff will listen to student concerns and will treat everyone equally. The school is committed to not allowing any bullying or unsafe behaviour.

Risk Management

Everyone in the school community plays an important part in keeping our school safe. Staff and students are responsible for looking for potential safety issues. Students are encouraged to tell an adult if something is not safe. Risks that are identified will be fixed straight away.

Staff Code of Conduct

The Staff Code of Conduct shows teachers how to behave at school and how to promote child safety and wellbeing.

Student Code of Conduct

The Student Code of Conduct shows students their rights how to behave safely at our school.

Child Safe Champions

Our child safe champions at school are Mr. Pietsch, Mrs. Truong, and Ms Clarke



Hiring staff and staff training

All staff employed at Sunshine Christian School have Child Safe background checks. The school ensures that all staff understand their responsibilities to child safety. Staff are continually trained in child safety, including first aid, anaphylaxis and mandatory reporting.

Inclusion and Empowerment

Sunshine Christian School encourages all students to express their opinions and stand up for themselves and others who do not feel safe at school. We encourage students to tell a trusted adult when they do not feel safe.

Valuing Differences

Students from different backgrounds are celebrated and respected at our school. We take care of people with different abilities. We seek to understand and respect the different cultures that make up our community.